

Multiplex Filters and Strainers From Rosedale Products

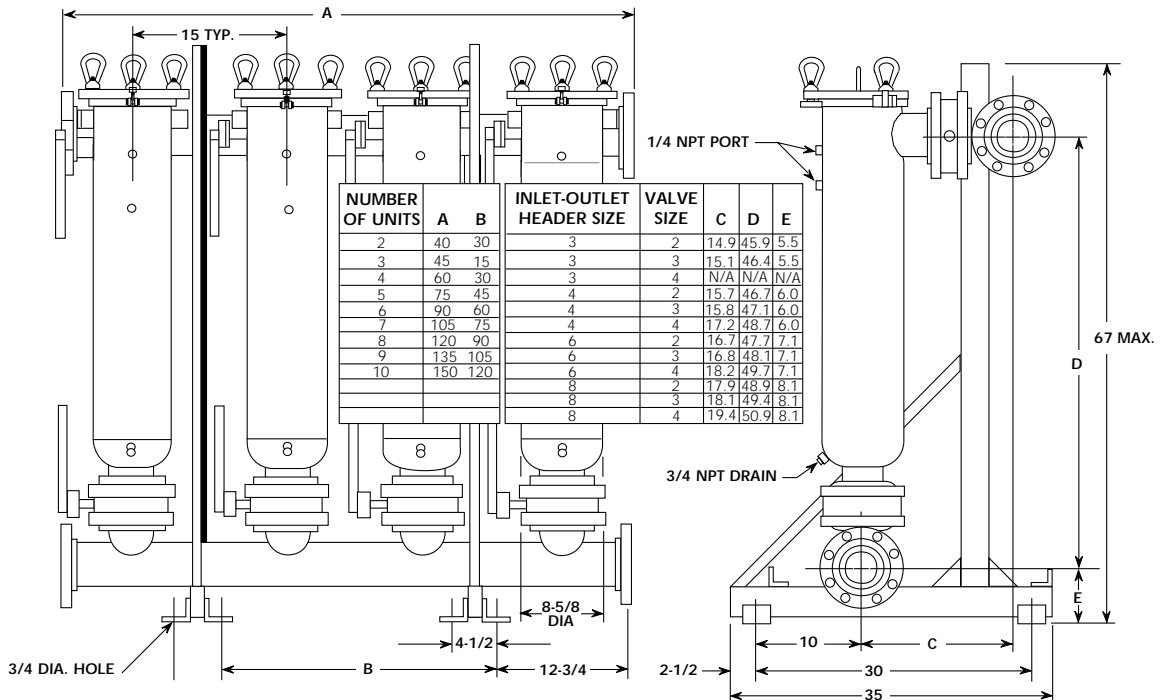
These high-capacity filters and strainers require no flow interruption for servicing

- For use with filter bags for filtering to as fine as one micron, or with perforated strainer baskets
- From 2 to 10 Model 8 housings are mounted in parallel to inlet and outlet manifolds
- Each unit has inlet and outlet valves, gage ports, and a drain port, to permit servicing one at a time
- These are completely packaged free-standing systems in carbon steel and stainless steel



See page 12 for more details on the Model 8 housings used.

Dimensions (IN)



How To Order

Build an ordering code as shown in the example

Example: **M8-30-10-8F-4-150-C-B-S-M-200-D-C-2M-50**

	Housing	Options	OPTIONAL INNER BASKET
MODEL NO.			
Multiplex = M8-30			
NUMBER OF HOUSINGS			
2, 3, 4, 5, 6, 7, 8, 9, 10			
PIPE SIZE (FLANGED)			
3-in. = 3F			
4-in. = 4F			
6-in. = 6F			
8-in. = 8F			
VALVE TYPE & SIZE (INCH)			
Butterfly type = 2, 3, 4			
PRESSURE RATING			
150 psi = 150			
HOUSING MATERIAL			
Carbon steel = C			
304 stainless steel = S			
316 stainless steel = S316			
COVER SEAL			
Buna N = B			
Ethylene Propylene = E			
Viton® = V			
Teflon® Encapsulated Viton® = TEV			
Teflon® (solid white) = TSW			
BASKET SEAL			
Seal required = S			
			INNER BASKET, MEDIA SIZE
			Perforation diameters (for type 2P baskets)
			1/4, 3/16, 9/64, 3/32, 1/16
			Mesh sizes (for type 2M and 2BM baskets)
			20, 30, 40, 50, 60, 70, 80, 100, 150, 200
			INNER BASKET, TYPE
			No sym. = No inner basket
			2P = Perforated strainer
			2B = Filter bag*
			2M = Mesh-lined strainer
			2BM = Mesh-lined filter bag
			ASME CODE STAMP
			C = Code
			DISPLACER
			D = Displacer
			OUTER BASKET, MEDIA SIZE
			Perforation diameters (for type P baskets)
			1/4, 3/16, 9/64, 3/32, 1/16
			Mesh sizes (for type M and BM baskets)
			20, 30, 40, 50, 60, 70, 80, 100, 150, 200
			OUTER BASKET, TYPE
			PB = Perforated strainer
			B = Filter bag*
			M = Mesh-lined strainer
			BM = Mesh-lined filter bag

- Flanges provided with the housing match the pressure rating of the vessel. Housings rated 150 psi have 150 class flanges. ANSI B16.5 Pressure-Temperature rating tables determine flange class for ASME housings.
- Higher pressure ratings available. Consult factory.
- Filter bags are ordered separately. See page 120-130.