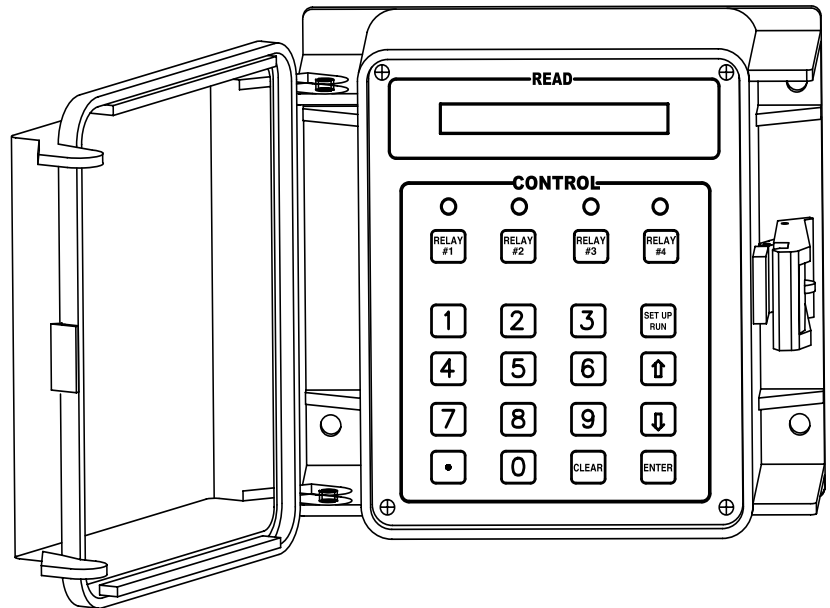


MicroTron Timer Controller

Microprocessor Control of:

- Chemical Feed
- Cooling Towers
- Biocide Control



Key Features

- 12 Bit Input Resolution
- Simple Step Through Menu
- Raised Dome Keypads
- Non-Volatile Memory
- No Battery Required
- User Defined Security Code
- Remote Communication Option
- Expanded Set Up Parameters
- Relay Test Keys
- 2 Year Warranty
- Prewired Configuration

Application

The MicroTron series of controllers provide a wide range of options and features for a custom tailored unit to meet your unique systems needs.

The timer series of MicroTrons can be configured with selectable feed timers that can be set up as either a water meter pulse activated timer (with an accumulator), or a percent timer plus 28 day biocide timers. Our expanded setup menu allows for lockout of inhibitor feed during a biocide feed period.

The MicroTron Series of controllers offers the most flexibility in features and functions for the price.

Base Functions

All MicroTron controller model numbers can be broken down as follows and will always start with an M or L.

- M** MicroTron controller with VFD display
- L** MicroTron controller with LCD display
- F** Single programmable feed timer
- F-2** Dual programmable feed timers
- F-3** Triple programmable feed timers
- B** Single 28 day timer
- B-2** Dual 28 day timer
- B-3** Triple 28 day timer

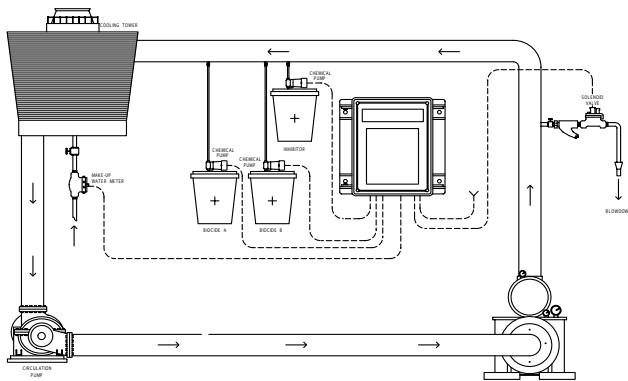
MicroTron controls have a maximum of 5 relay outputs. Each letter designation above (except M and L) uses one relay. Letters with a -2 or -3 indicate the use of more relays.

Example Model Number: MF-2B-2

Options

Your unit may be supplied with one or more options listed at the end of the model number, for example MF-2B-2. This list represents our most popular options. For a complete list of options, consult the factory.

- A** Conduit Connections
- A-6** On/Off Power Switch (Adds Lower Enclosure)
- A-7** Lower Enclosure
- D** 220 V Service (Must be conduit unit)
- E** Mounted Flow Switch Assembly 150 psi
- G** Serial Line Connection
- H** Serial Line Connection With Modem
- J** Windows Software
- L** Additional Output Cord
- M** Alarm Relay
- M-1S** Sonic Alarm Buzzer with Silence Switch
- V** Digital input for Bleed-Off Water Meter
- W** Power Relay 1.5 HP Maximum, 25 Amps
- X** Tank Low Level Alarm with Level Wand(s)
- Z-6** Accepts 2 Water Meter Inputs
- Z-9** Allows for prebleed and lockout of Chem A



Specifications

Electrical

- **Input:** 115 VAC, 50/60 Hz
 - **Control:** 115 VAC, 15 Amp Total Capacity
- Prewired units are supplied with an eight foot power cord and 11" output receptacles.

Operational

- **Display:** VFD 1 x 16 florescent alphanumeric
LCD 1 x 16 backlit alphanumeric
- **Timers (Selectable):**
Pulse: 99 min, 59 sec run time, 1-99 counts
% of Time: 1-99 minute cycle, 1-99% on time
- **Biocide Timer:** 28 day programmable

Enclosure

Heavy duty NEMA 4X type high impact thermoplastic with padlockable gasketed Lexan viewing door.

Environment

Ambient temperature: 0° to 125°F (-17 to 52°C)
Relative humidity: 0 to 100%

Shipping Weight: Approximately 6 lbs.

Dimensions: W 7" x H 6.5" x D 4.5"

